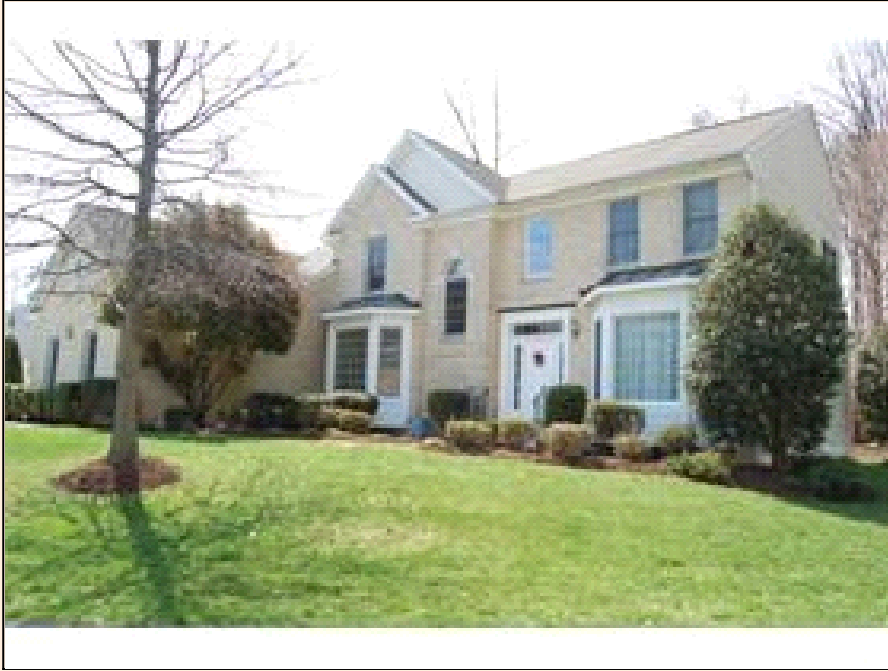


9771 Viewcrest Drive Fairfax Station

ELEGANT BRENTWOOD COLONIAL

PROPERTY DETAILS



Listing Price: **\$879,900**

Listing Address: 9771 Viewcrest Drive
Fairfax Station
VA 22039

Bedrooms: 5

Full Baths: 4

Partial Baths: 1

SQ FT: 4781

Lot Size: 0.41ac

Style: Colonial

Heat Source: Gas

QR Code:

On a SmartPhone?
Scan the QR code
to see this listing



PROPERTY DESCRIPTION

This Striking Brentwood model Colonial, built in 1993, sits on a premium Corner lot with 4,781 SF of well-designed living space! Sighted in Lee Chapel Grove, Fairfax Station, Virginia, this home is loaded with 5BRs, 4.5BAs & 3-Car Garage! The open Modern floor plan features a 2-Story Foyer with Overlook, Elegant accents in the Living Room & Formal Dining Room, and a Huge Extended Family Room with Gas Fireplace. A Cheery GE Kitchen with Cooking Island, Library, Huge Master Suite w/Whirlpool FBA & a Finished lower level with walk-up to the rear tree-lined Brick Patio! Lee Chapel Grove is a convenient place to live! The area is famous for its Fabulous shopping & dining opportunities, its Endless entertainment possibilities, Excellent medical facilities & Continuing Education!

Plus, the nearby corridors of I-95, I-66, Route 123 & Fairfax County Pkwy makes commuting a breeze into DC and throughout Northern Virginia. Make this Dream Home yours, Call Pat Fales for your private tour today!

CONTACT INFORMATION



Pat Fales Associates
RE/MAX Allegiance
patfalesrealestate.com
Serving the Virginia Suburbs of
Washington DC 22015
703-503-4365
866-338-8078
pat@patfales.com





Equal Housing Opportunity

Property information deemed reliable but not guaranteed and should be verified.

Copyright © 2003-2012 Real Pro Systems LLC. All rights reserved.