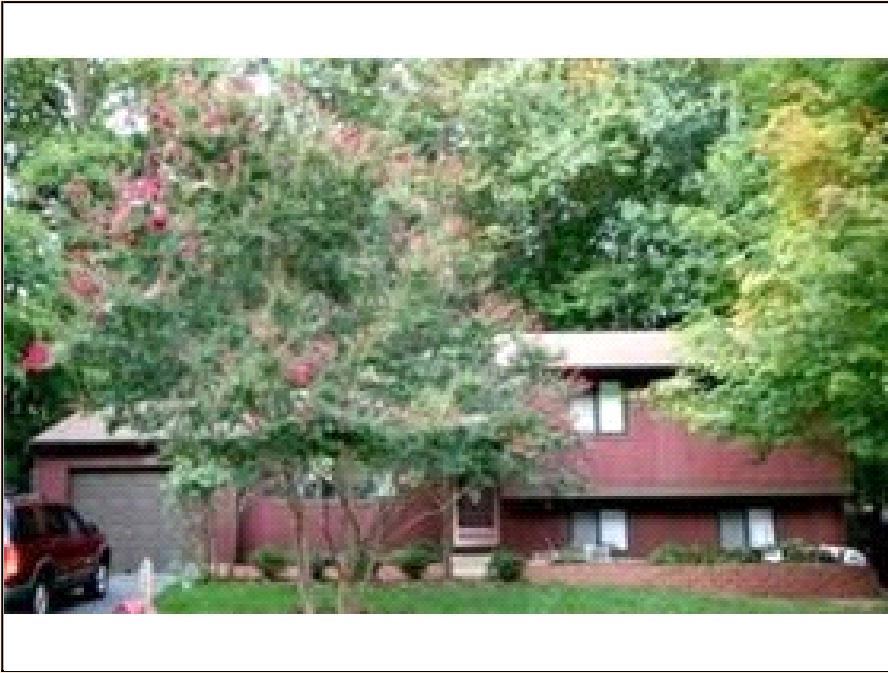


7911 Hill Stream Court Springfield

Horizontal Lines and Sleek Details!

PROPERTY DETAILS



Listing Price: **\$425,000**

Listing Address: 7911 Hill Stream Court
Springfield VA 22153

Bedrooms: 3

Full Baths: 2

Partial Baths: 1

SQ FT: 1938

Lot Size: .23 acres

Style: Contemporary

Garage: 1 Car

Heat Source: Electric

Schools: South County

QR Code:

On a SmartPhone?
Scan the QR code
to see this listing



PROPERTY DESCRIPTION

Horizontal lines and simple details make for comfortable living in this fabulously maintained Contemporary home in the sought-after community of Newington Forest in Springfield, Virginia. Beautifully complemented by an easy commute, this modern gem is well-designed and promotes a close relationship to the outdoors with its appealing Solarium addition and wooded, fenced yard. Built in 1978 by Ryan Homes, this 3 bedroom, 2.5 bath 4-level Crofton-model home is a rare peaceful retreat and offers these desirable features...

- Open ceramic tile Foyer entry
- The front Living Room and rear Dining Room share a massive Vaulted Ceiling and plush neutral carpeting with plenty of casement windows and sliding glass doors
- Welcoming Sunroom with earth-toned terra-cotta tile flooring, 1' wood paneled walls, casement windows and glass ceiling offering wonderful seasonal views and atrium doors to the fenced rear yard.
- Spacious well-equipped Kitchen has vaulted ceiling, ceramic tile flooring, double stainless-steel sink with disposal and a decorative tiffany-styled light fixture over the eating area. Updated appliances include refrigerator ('97), dishwasher ('02) and original electric range with an upper exhaust hood.
- Master bedroom suite with plush carpeting, spacious closets and private Full Bath
- Bedrooms #2 & #3 offer ample closet space with wall-to-wall carpeting and casement windows
- Hall full bath has custom ceramic tiling, tub/shower combination, oak vanity and private linen closet.
- Spacious Family Room with gleaming wood floors, Brick raised-hearth fireplace, a dry bar & sliding double pane windows.
- Half Bath, separate utility / laundry room with electric water heater, furnace, & Washer and Dryer set.

- Recreation room is a perfect location for hobbies, a playroom, media room or home office.
- Plus many updates & improvements!

Newington Forest is a well kept friendly planned community. Home Owner Association Board of Directors provide amenities and services such as pool, community center, ball field, bike/walking paths, basketball/tennis courts, grounds maintenance, trash disposal and monthly newsletter. Visit www.newingtonforest.org for up to date information on community events, activities and services. Easy access to local schools, Metro, Fairfax County Parkway, I-95, 395, 495 and carpool lanes to Washington, DC.

CONTACT INFORMATION



Pat Fales Associates
RE/MAX Allegiance
patfalesrealestate.com
Serving the Virginia Suburbs of
Washington DC 22015
703-503-4365
866-338-8078
pat@patfales.com





Equal Housing Opportunity

Property information deemed reliable but not guaranteed and should be verified.

Copyright © 2003-2012 Real Pro Systems LLC. All rights reserved.